



**PRODUCT INFO
& DATASHEET**

SICO IRON FORMULATIONS

SICOGREEN-S IRON EDTA 100

Safe foliar suspension for prevention and control of iron deficiency.

03/2022

1/ PRODUCT DESCRIPTION

*** BENEFITS**

- This EDTA formulated Iron is the most reliable Fe source for leaf application due to a good crop tolerance, and allowing a better circulation in plant tissues independently of the weather conditions.
- Important role of Iron EDTA in respiratory functions, in the activation of chlorophyll synthesis, improving the photosynthesis activity.
- Correction of Fe deficiency condition at soils with pH >7, sandy soils, or where an excess of Copper, Potassium or Magnesium is observed.

2/ PRODUCT SPECIFICATIONS & ANALYSIS

*** ANALYSIS**

Iron (Fe) EDTA 7.7 % (= 100 g/l)

*** SPECIFICATIONS**

| | |
|-------------|------------|
| Colour | brown* |
| Type | suspension |
| Density | 1.3 |
| pH at 20 °C | 7-8.5 |

*Colour differences may occur and do not affect the quality of the fertiliser.

3/ RECOMMENDED APPLICATION RATES & DOSAGES

For the preventive and curative control of deficiency or imbalance in the assimilation of iron.

GENERAL : 1.5 l/ha in 300 l water or 0.5% solution if applied by hand, during early crop growth stages, when needed.

ARABLE CROPS:

- Bean : 2 x 1 l/ha in two applications, from 5-10 cm stage.
- Cereals : 1 l/ha at begin of vegetation in spring.
- Potato : 2 x 1.5 l/ha at row closing at 10 day interval.
- Soybean : 2 x 1 l/ha at 6 leaf stage, repeat 15 days later.
- Oilseed rape : 1 l/ha at 4 leaf stage.
- Sugar Beet : 3 x 1 l/ha at 4-6 leaf stage and every 14 days.

PERENNIALS CROPS:

- Grape : 4 x 1 l/ha at 2-3 leaves, separated grapes, flower buds separated, and nodding.
- Pome fruit : 2 l/ha when fruit reaches 2.5 cm or 15-30 ml/tree at winter to soil (irrigated), no application during flowering.
- Pine trees : 3 x 1 l/ha during petal fall, fruit set and fruit enlargement.
- Core trees : 3 x 1 l/ha during fruit set, fall of the calyx and young fruits.
- Stone fruit : 15-30 ml/tree at late winter to soil (irrigated), 1 x 1.5 l/ha from fruit setting to harvest.

VEGETABLES:

- Strawberry, other berries : 200 ml/100 m row before start of vegetative phase, 1.5 l/ha after growth start in spring as often as needed.
- Greens : 2.5 l/ha in > 400 l water, if needed.

ORNAMENTAL CROPS: 200 ml/1000 l in fertigation to begin of growth, 0.5 l/100 l spray solution before flowering.

Or any other crop, to be used only where there is a recognised need. Do not exceed the appropriate dose rates. For any other further detail, please contact your agronomist.
SAP International Corporation bv does not take responsibility for wrong application. Please revise your local regulation or get advice from your local agronomic advisory service.



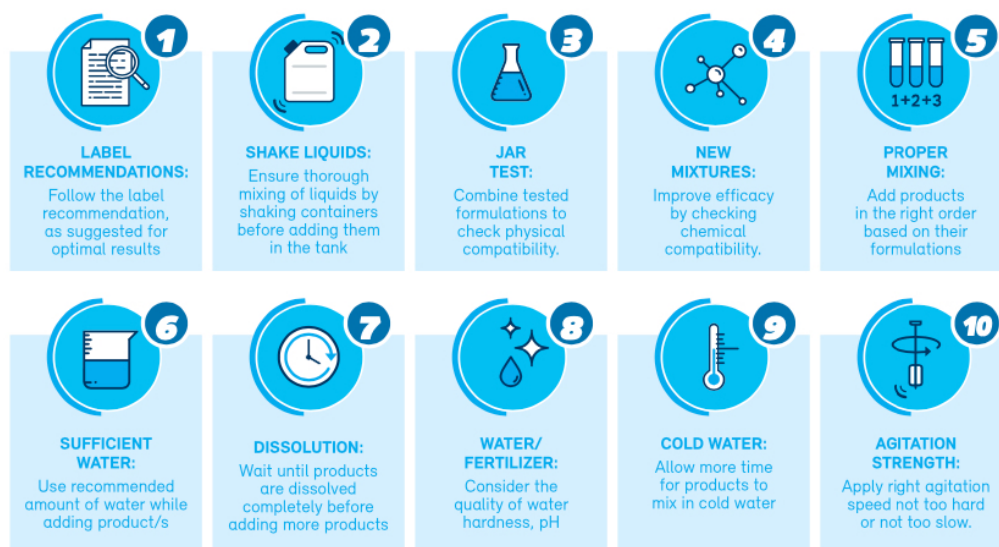
4/ INSTRUCTIONS FOR USE & STORAGE

Instructions for use & Storage



TANK MIXES

Compatibility & recommendations



5/ PACKINGS

- 10 lt cans, 500 lt per pallet, 20 pallets = 10,000 lt/20' container.
- 200 lt drums x 4 per pallet, 10 pallets = 8,000 lt/20' container.
- 1000 lt IBC, 10,000 lt/20' container.