



**PRODUCT INFO  
& DATASHEET**

SICO IRON FORMULATIONS

# **SICOGREEN-L Fe + Mn EDTA**

## **Liquid 3.5% Fe + 2.8% Mn**

03/2022

### **1/ PRODUCT DESCRIPTION**

#### **\* BENEFITS**

- Essential in photosynthesis process because of synergistic effect of Manganese assistance to Iron in building the chlorophyll molecule.
- Directly assimilable by the plant due to EDTA form of both micro-nutrients.
- Supports improved crop growth in high pH calcareous soils, avoiding Iron deficiency induced chlorosis, due to synergistic effect of Iron- and Manganese Chelates.

### **2/ PRODUCT SPECIFICATIONS & ANALYSIS**

#### **\* ANALYSIS**

Iron (Fe) EDTA	3.5 %	(= 46 g/l)
Manganese (Mn) EDTA	2.8 %	(= 36 g/l)

#### **\* SPECIFICATIONS**

Colour	red-brown*
Type	clear liquid
Density	1.3
pH at 20 °C	6-8

\*Colour differences may occur and do not affect the quality of the fertiliser.

### **3/ RECOMMENDED APPLICATION RATES & DOSAGES**

For the preventive and curative control of deficiency or imbalance in the assimilation of iron.

**GENERAL** : 3 l/ha in 300 l water or 1% solution if applied by hand, during early crop growth stages, when needed.

#### **ARABLE CROPS:**

- Cereals : 2 l/ha after 3 leaf stage.
- Potato : 2 x 3 l/ha at row closing at 10 day interval.
- Soybean : 2 x 2 l/ha at 6 leaf stage, repeat 15 days later.
- Oilseed rape : 2 l/ha at 4 leaf stage.
- Sugar Beet : 3 x 2 l/ha at 4-6 leaf stage and every 14 days.

#### **PERENNIALS AND FRUIT TREES:**

- Pine trees and Ornamental trees : 3 x 2 l/ha during petal fall, fruit set and fruit enlargement.
- Vineyard : 3 x 2 l/ha when clusters are visible, during cluster separation and at separate flower bud.
- Pome fruit : 3 l/ha when fruit reaches 2.5 cm or 30-60 ml/tree at late winter to soil (irrigated).
- Stone fruit : 30-60 ml/tree at late winter to soil (irrigated), 2 x 3 l/ha from fruit setting to harvest.

#### **VEGETABLES:**

- Strawberry, other berries : 400 ml/100 m row before start of vegetative phase, 3 l/ha after growth start in spring as often as needed.

**ORNAMENTAL CROPS:** 400 ml/1000 l in fertigation to begin of growth, 1 l/100 l spray solution before flowering.

- Greens : 5 l/ha in > 400 l water, if needed.

Or any other crop, to be used only where there is a recognised need. Do not exceed the appropriate dose rates. For any other further detail, please contact your agronomist.

SAP International Corporation bv does not take responsibility for wrong application. Please revise your local regulation or get advice from your local agronomic advisory service.



**PRODUCT INFO  
& DATASHEET**

**4/ INSTRUCTIONS FOR USE & STORAGE**

**Instructions for use & Storage**



**1**  
Fill 2/3 of the tank sprayer with clean water, turn on the agitation,

**2**  
Add the plant protection product

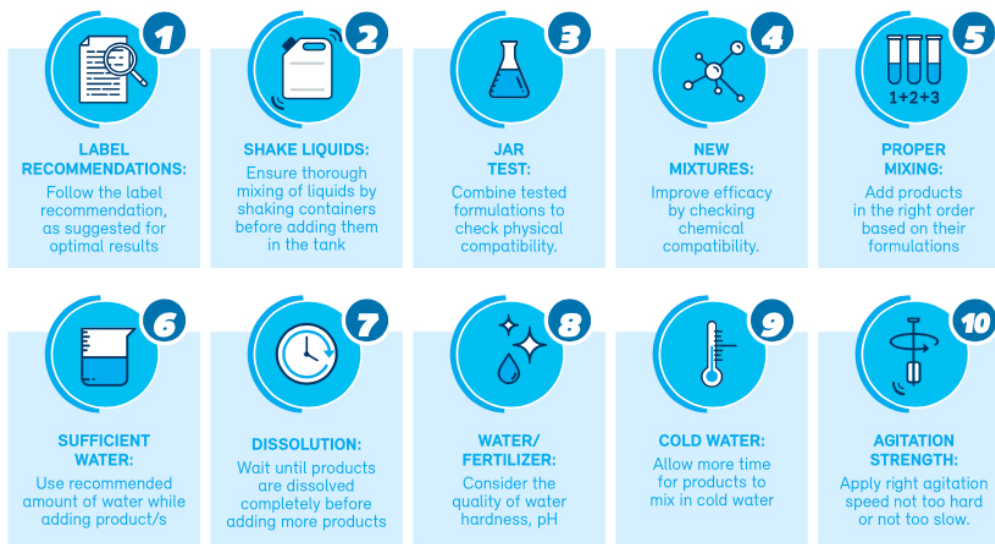
**3**  
Shake the canister

**4**  
Add the SICOGREEN fertilizer

**5**  
Finish to fill the tank with water



**TANK MIXES**  
Compatibility & recommendations



**5/ PACKINGS**

- 10 lt cans, 500 lt per pallet, 20 pallets = 10,000 lt/20' container.
- 200 lt drums x 4 per pallet, 10 pallets = 8,000 lt/20' container.
- 1000 lt IBC, 10,000 lt/20' container.

Any information in this publication is believed to be accurate and is given in good faith, but is for the customer to satisfy itself of the suitability for its own particular purpose. No representation, warranty or guarantee is made to its accuracy, reliability or completeness.