



SICOGREEN-L liquid NPK 10-4-7 + TE **(Cu, Fe, Mn, Zn, B, Mo) – Low in chlor** **- EC Fertiliser -**

Ref. 92150 - Revised 04/2022

1/ PRODUCT DESCRIPTION

*** BENEFITS**

- Improves plant growth and fruit setting, because of high available nutrients.
- Reduces crop defects due to complete formulation.
- Improves the quality of granis due to direct phosphorus availability.

2/ PRODUCT SPECIFICATIONS & ANALYSIS

*** ANALYSIS**

| | | |
|--|-----------|---------------|
| Total N | : 10.0 % | (= 119 g/l) |
| Urea Nitrogen (N-NH ₂) | : 10.0 % | (= 119 g/l) |
| Phosphorous pentoxide (P ₂ O ₅) | : 4.0 % | (= 48 g/l) |
| Potassium Oxide (K ₂ O) (low in chloride) | : 7.0 % | (= 83 g/l) |
| | | |
| Copper-EDTA (Cu) | : 0.008 % | (= 0.09 g/l) |
| Iron-EDTA (Fe) | : 0.02 % | (= 0.24 g/l) |
| Manganese-EDTA (Mn) | : 0.04 % | (= 0.47 g/l) |
| Zinc-EDTA (Zn) | : 0.03 % | (= 0.36 g/l) |
| Boron (B) | : 0.04 % | (= 0.47 g/l) |
| Molybdenum (Mo) | : 0.004 % | (= 0.047 g/l) |

*** SPECIFICATIONS**

| | |
|-------------|--------------|
| Colour | green* |
| Type | clear liquid |
| Density | 1.19 |
| pH at 20 °C | 7.6 |

*Colour differences may occur and do not affect the quality of the fertiliser.

3/ RECOMMENDED APPLICATION RATES & DOSAGES

Supports the plant growth and the fruit setting to all crops.

PERENNIALS CROPS:

- Grapes : 3-4 x 5 l/ha from fruit setting and at 10-14 day intervals.
- Fruit trees : 2-3 x 5 l/ha after petals fall and at 10-14 day intervals.
- Nuts trees : 3 x 4 l/ha at dried stigma stage and all 15 days.
- Strawberries : 1-2 x 5-10 l/ha in the spring and 5 l/ha after harvest in late summer/early autumn.
- Olive : 5-10 l/ha before flowering and 5-10 l/ha 1-2 weeks after flowering.
- Hop : 3-4 x 5 l/ha during the plant protection period.
- Nursery : 3-5 x 0.05% for leaf application or 0.1% for soil application.

ARABLE CROPS:

- Winter cereals : 5-10 l/ha at beginning of vegetation and 1-2 x 5-10 l/ha from tillering to flag leaf stage.
- Summer cereals : 1-2 x 5-10 l/ha from tillering to flag leaf stage.
- Pea, bean, soybean : 5 l/ha at 6 -8 leaf stage.
- Oilseed rape : 1-2 x 5-10 l/ha in spring at beginning of vegetation to blooming (high application rate in stress situations).
- Sugar Beet : 1-2 x 5 l/ha from 6-8 leaf stage till row closure.
- Potato : 3 x 4-5 l/ha from stolon initiation and all 15 days; during stress situation 3 x 5-10 l/ha every 7-14 days.
- Sweet potato : 1-3 x 5 l/ha after total emergence and during tuber bulking every 7-14 days.
- Sunflower : 5 l/ha from 4-6 leaf stage.
- Flax : 4-5 l/ha at 5 cm and a second application of 4-5 l/ha at 8-10 cm.

VEGETABLES:

- Young plants : 2-5 x 0.5 % starting at 2 leaf stage and all 7-10 days.
- Greenhouse crops : 2-5 x 0.5 % for leaf or soil applications.
- Open field vegetables : 2-5 x 5-10 l/ha during the vegetative stage and every 7-14 days.

Any information in this publication is believed to be accurate and is given in good faith, but is for the customer to satisfy itself of the suitability for its own particular purpose. No representation, warranty or guarantee is made to its accuracy, reliability or completeness.



**PRODUCT INFO
& DATASHEET**

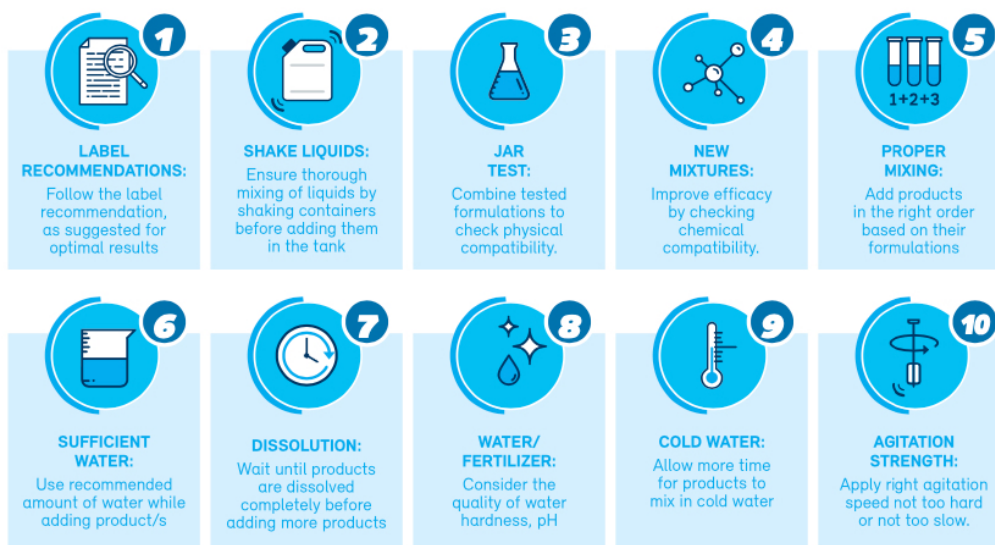
Or any other crop, to be used only where there is a recognised need. Donot exceed the appropriate dose rates. For any other further detail, please contact your agronomist.
SAP International Corporation bv does not take responsibility for wrong application. Please revise your local regulation or get advice from your local agronomic advisory service.

4/ INSTRUCTIONS FOR USE & STORAGE

Instructions for use & Storage



TANK MIXES
Compatibility & recommendations



5/ PACKINGS

- 10 lt cans, 500 lt per pallet, 20 pallets = 10,000 lt/20' container.
- 200 lt drums x 4 per pallet, 10 pallets = 8,000 lt/20' container.
- 1000 lt IBC, 10,000 lt/20' container.

Any information in this publication is believed to be accurate and is given in good faith, but is for the customer to satisfy itself of the suitability for its own particular purpose. No representation, warranty or guarantee is made to its accuracy, reliability or completeness.